

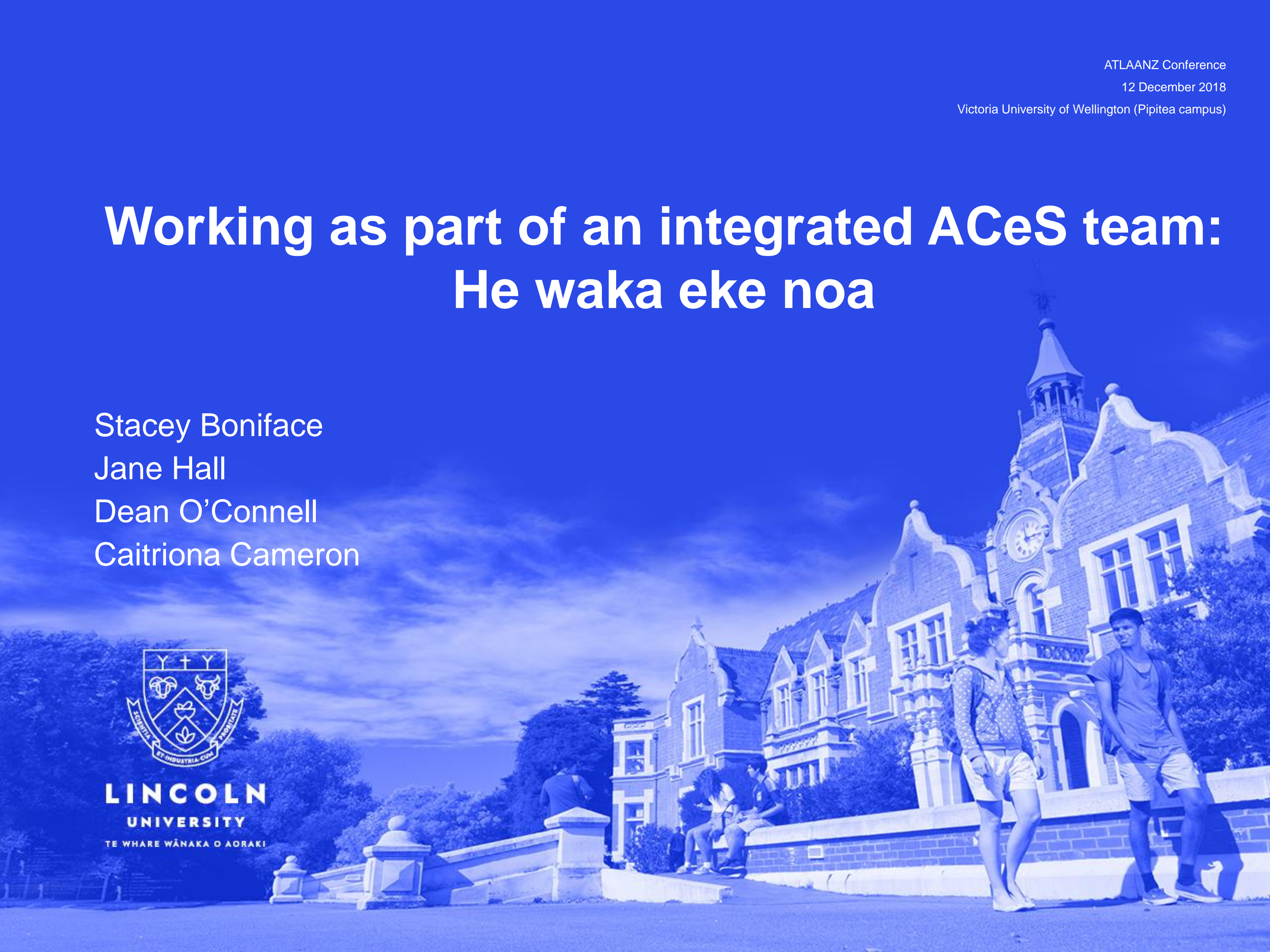
# Working as part of an integrated ACeS team: He waka eke noa

Stacey Boniface  
Jane Hall  
Dean O'Connell  
Caitriona Cameron



**LINCOLN**  
UNIVERSITY

TE WHARE WĀNAKA O AORAKI



What does the term 'integrated team'  
mean to you?

# LTL Learning Advisors

## WHO ARE WE ?



**Tom - Maths, Stats  
Dean - Maths, Stats,  
Research Design**



**Caitriona  
Writing, Referencing, Research  
Management**



**Michelle and Jane  
Careers and Employment**



**Hadrian  
Information Skills,  
Referencing,  
EndNote**



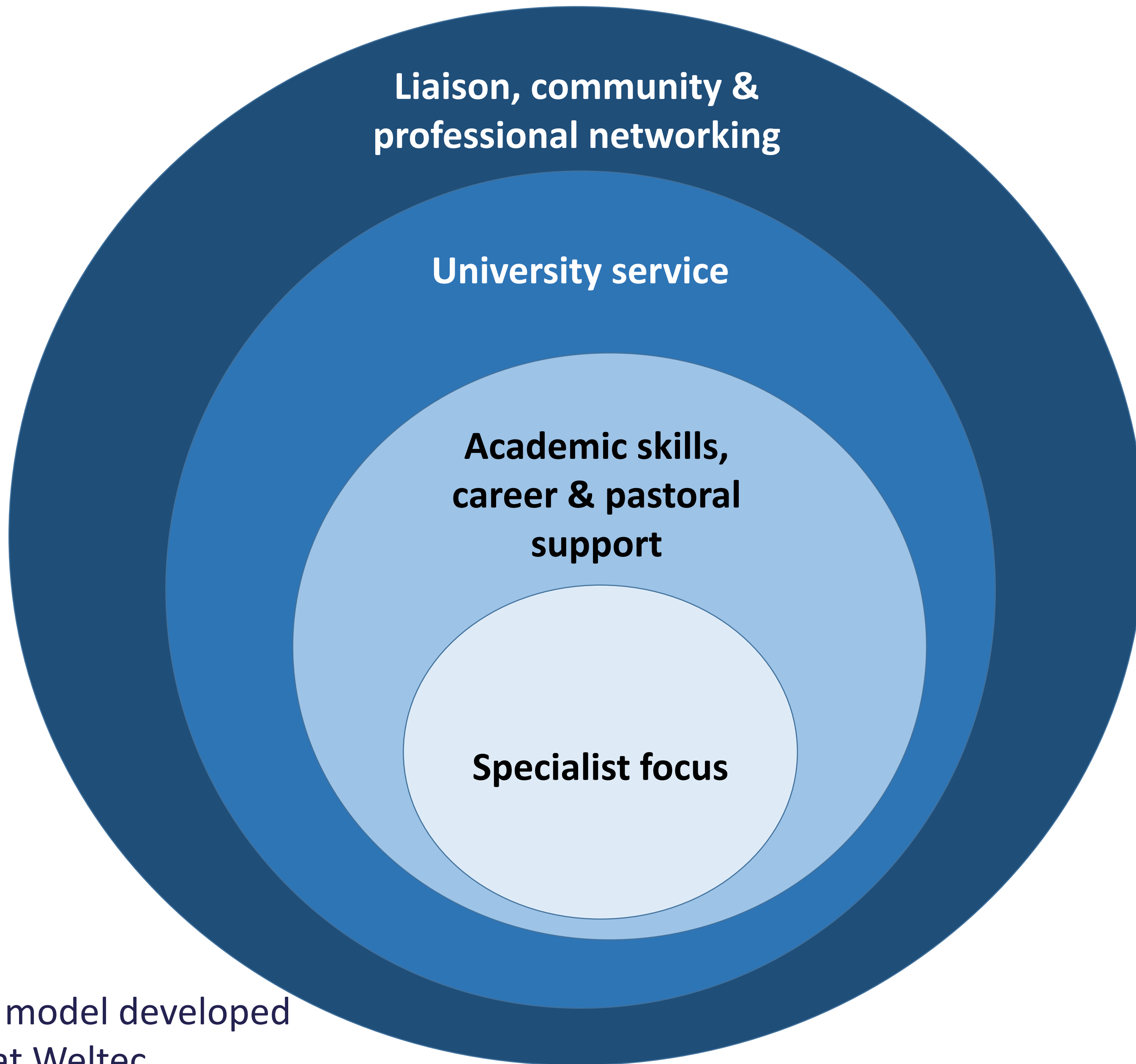
**Craig  
Writing, Study Skills  
PASS**



**Stacey  
Writing Skills,  
Referencing**



**Sarah  
Finding Info,  
Endnote, Copyright,  
Researcher Profile**



Inspired by model developed  
by Lin Ayo at Weltec

# Working as part of an integrated Academic & Careers Skills team (ACeS)

## Key factors

- Passion & pastoral care
- Mutual trust, respect & collaboration
- Strong Community of Practice
- State of mind leading to sense of “unit” pride
- Autonomy
- Independence
- Clear vision

# Working as part of an integrated Academic & Careers Skills team (ACeS)

## Key factors

“...what makes our team so successful is our diversity and our curiosity for learning, as all advisors come from many different disciplines.”

“We’re here to assist students through their journey into the university, through the university and then whatever they choose to do next.”

# Discussion

Q1: What does the term 'integrated team' mean to you?

Q2: Where is your team located? How is your team structured?

Q3: How does your team work and communicate?  
Does it facilitate collaboration? Do you have a community of practice?

Q4: What do you like the most about the way your service runs? What would you change if you could?



Image credit: Phil Whitehouse from London, United Kingdom [CC BY 2.0 (<https://creativecommons.org/licenses/by/2.0>)], via Wikimedia Commons